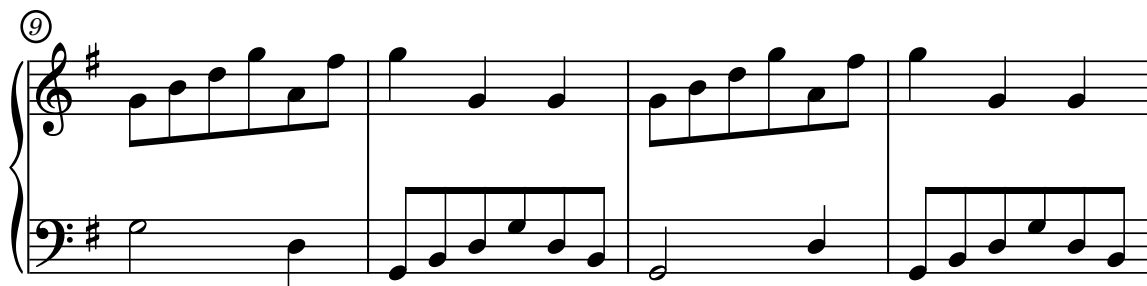
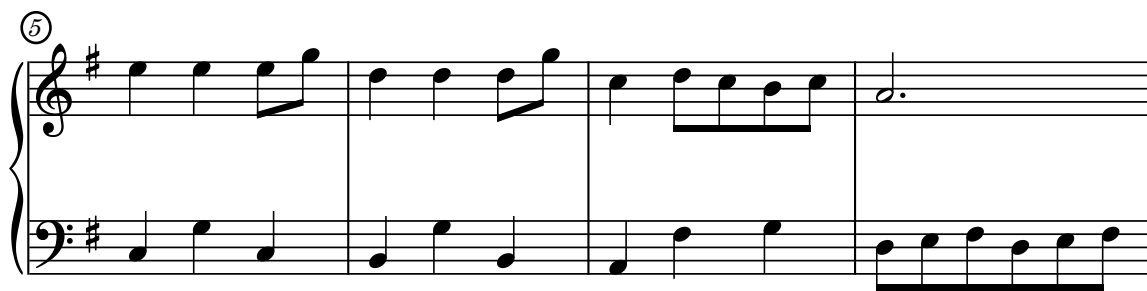
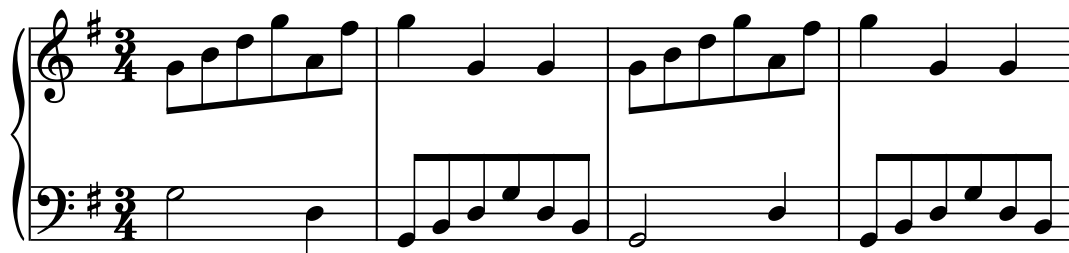


# Minuetto in G

*Dal libro per Anna Magdalena*

*J.S.Bach*



(17)

Measures 17-21 of a musical score in G major. Measure 17 begins with a repeat sign. The right hand features a melodic line with eighth and sixteenth notes, while the left hand provides a bass line with eighth and sixteenth notes. The system concludes with a repeat sign in measure 21.

(22)

Measures 22-26 of a musical score in G major. Measure 22 includes a triplet of eighth notes in the right hand. The right hand continues with a melodic line, and the left hand plays a supporting bass line. The system ends with a repeat sign in measure 26.

(27)

Measures 27-31 of a musical score in G major. The right hand plays a melodic line with eighth and sixteenth notes, and the left hand provides a bass line. The system concludes with a repeat sign in measure 31.

(32)

Measures 32-35 of a musical score in G major. Measure 32 starts with a half note in the right hand. The right hand features a melodic line with eighth and sixteenth notes, and the left hand plays a bass line. The system ends with a repeat sign in measure 35.

(36)

Measures 36-40 of a musical score in G major. Measure 36 includes a triplet of eighth notes in the right hand. The right hand plays a melodic line, and the left hand provides a bass line. The system concludes with a repeat sign in measure 40.